



## 2/2-way valve with PTFE bellows for fluid separation

- High Medium resistance
- Easy to clean for hygienic applications
- Long life
- Easy conversion of the actuator function, CFA/CFB
- Compact
- With stainless steel actuator

Type 2080 can be combined with...



**Type 6012 P**  
Pilot valve



**Type 8645**  
Valve island

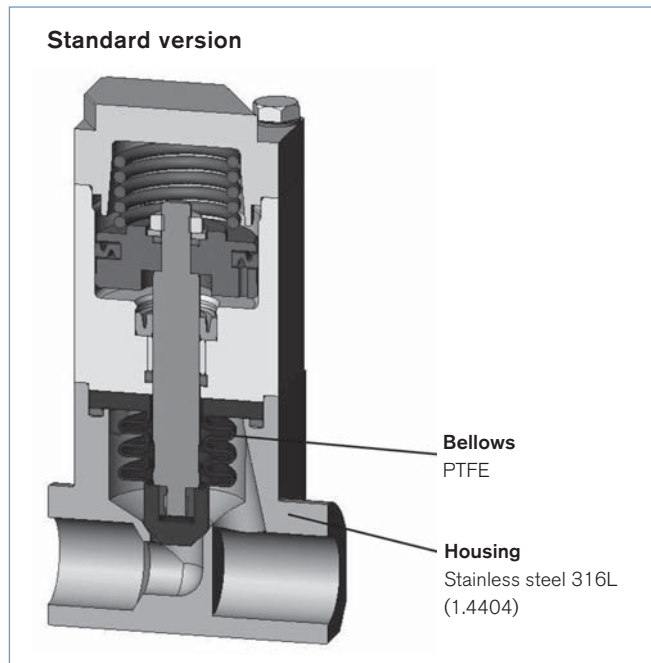


**Type 8041**  
Flow sensor

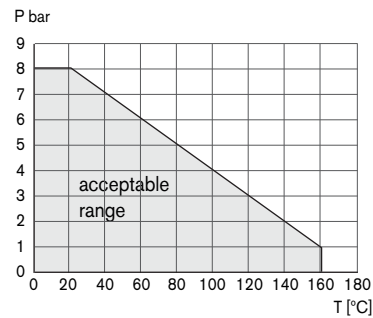
The valve consists of a pneumatically piston actuator with return spring, a stainless steel body and PTFE bellows. The PTFE bellows are used for the separation of the medium. With the appropriate installation (body to bottom) the valve is self-draining. The materials used and the internal contours are simple to clean (CIP and SIP). The valve is suitable for food technology. The modular structure permits configuration with different armatures and customized port connectors. The pneumatic actuator is servo assisted by a pilot valve, a valve block or similar.

Technical data	
<b>Orifice</b>	DN 4 to DN 10
<b>Medium</b>	Neutral to aggressive gases and liquids
<b>Medium pressure range</b> <b>Medium temperature</b>	Vacuum up to 8 bar (see PT-Diagram)
<b>Port connections</b>	Threaded port G 3/8, weld end, flange connection
<b>Pilot air connections</b>	Threaded port G 1/8
<b>Position detection</b>	Reedcontact (two wire, closer), cable length: 3m
<b>Installation</b>	Upright assembly for self-draining (body to bottom)
<b>Body material</b>	Stainless steel 316Ti (1.4571), with flange 316L (1.4404)
<b>Actuator material</b>	Stainless steel 304L (1.4301)
<b>Bellows material</b>	TFM-PTFE
<b>Wetted materials</b>	Stainless steel 316Ti /316L, PTFE
<b>Return pressure</b>	Tight to 8 bar
<b>Pilot air pressure</b>	4.5 to 10 bar
<b>Pilot fluid</b>	Neutral gases, air
<b>Ambient temperature</b>	Max. +90 °C
<b>Surface finish</b>	Surface finish Ra=0.8, others on request
<b>Special features</b>	- With self-draining operation - Suitable for CIP and SIP (cleaning in process) - Suitable for foodstuffs - FDA conform
<b>Flow rate</b> Kv value water [m³/h]	Measured at +20°C, 1 bar Pressure at valve inlet and free outlet
<b>Pressure values [bar]</b>	Overpressure with respect to atmospheric pressure

## Material



## Pressure temperature characteristics

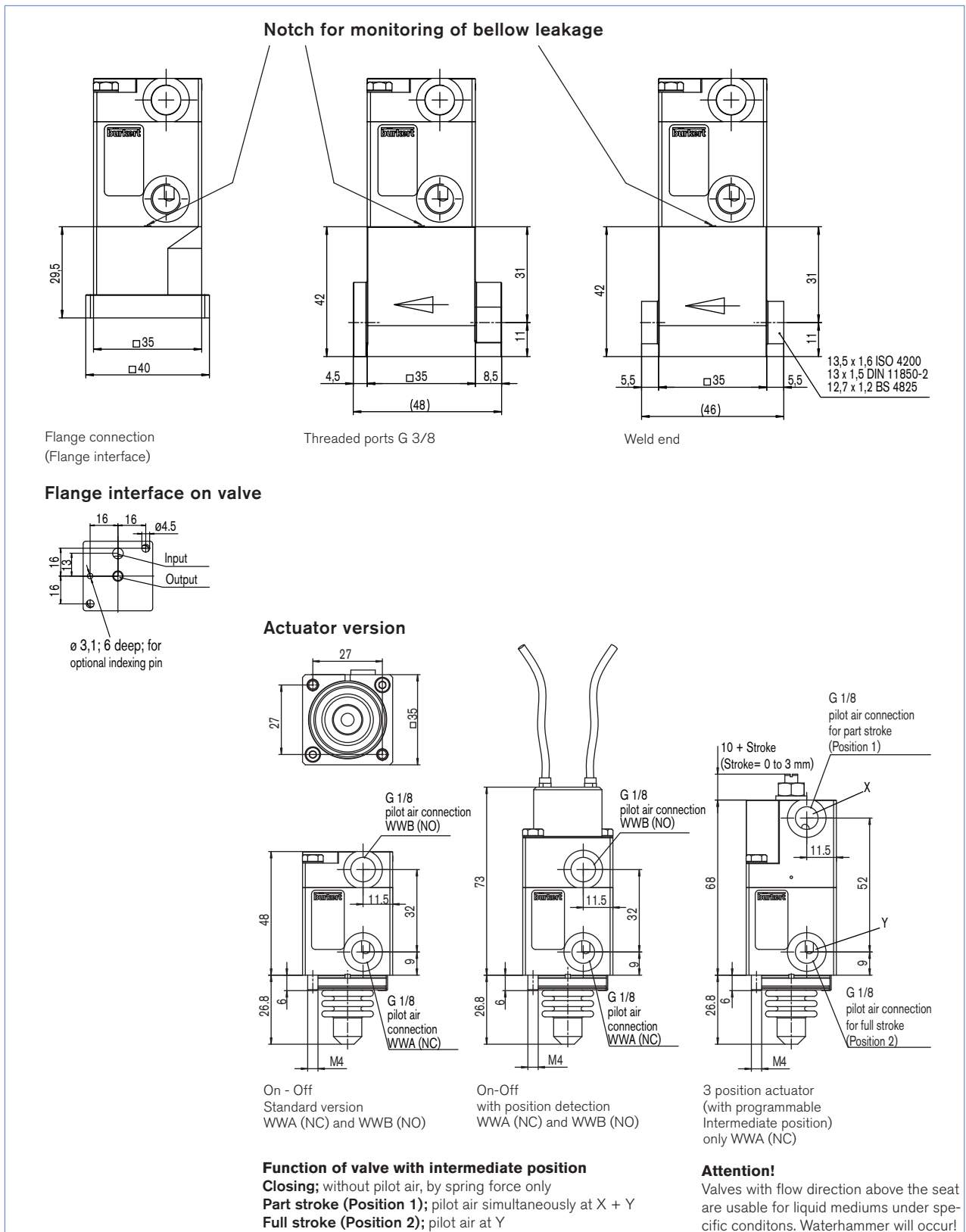


## Ordering chart for valves (other versions on request)

All valves with pilot air ports G 1/8 and actuator body in stainless steel

Circuit function	Actuator version	Orifice [mm]	kv value [m <sup>3</sup> /h]	Medium connection	Item no.
<b>A</b>  2/2-way-valve, (NC) servo assisted, without pilot air closed by spring force, actuated with a pilot valve, valve block or similar	On-Off	10	1.14	Threaded port G 3/8	180 729
		10	1.14	Weld end acc. to BS 4825 (12.7 x 1.2)	179 582
		10	1.14	Weld end acc. to ISO 4200 (13.5 x 1.6)	186 407
		10	1.14	Weld end acc. to DIN 11850-2 (13 x 1.5)	186 409
		6	0.64	Flange port	182 863
		–	–	without body (only actuator)	180 555
	On-Off with position detection	10	1.14	Threaded port G 3/8	186 420
		10	1.14	Weld end acc. to BS 4825 (12.7 x 1.2)	186 421
		10	1.14	Weld end acc. to ISO 4200 (13.5 x 1.6)	186 422
		10	1.14	Weld end acc. to DIN 11850-2 (13 x 1.5)	186 423
		6	0.64	Flange port	186 424
		–	–	without body (only actuator)	186 425
	3-Positions actuator (with intermediate position)	10	1.14	Threaded port G 3/8	186 410
		10	1.14	Weld end acc. to BS 4825 (12.7 x 1.2)	186 411
		10	1.14	Weld end acc. to ISO 4200 (13.5 x 1.6)	186 413
10		1.14	Weld end acc. to DIN 11850-2 (13 x 1.5)	186 414	
6		0.64	Flange port	186 415	
–		–	without body (only actuator)	186 416	
<b>B</b>  2/2-way-valve, (NO) servo assisted, without pilot air closed by spring-force, actuated with a pilot valve, valve block or similar	On-Off	10	1.14	Threaded port G 3/8	186 417
		10	1.14	Weld end acc. to BS 4825 (12.7 x 1.2)	180 325
		10	1.14	Weld end acc. to ISO 4200 (13.5 x 1.6)	186 418
		10	1.14	Weld end acc. to DIN 11850-2 (13 x 1.5)	186 419
		6	0.64	Flange port	182 864
		–	–	without body (only actuator)	182 285
	On-Off with position detection	10	1.14	Threaded port G 3/8	186 428
		10	1.14	Weld end acc. to BS 4825 (12.7 x 1.2)	186 429
		10	1.14	Weld end acc. to ISO 4200 (13.5 x 1.6)	186 430
		10	1.14	Weld end acc. to DIN 11850-2 (13 x 1.5)	186 431
		6	0.64	Flange port	186 427
		–	–	without body (only actuator)	186 426

Dimensions [mm]



To find your nearest Bürkert facility, click on the orange box → [www.burkert.com](http://www.burkert.com)

In case of special application conditions, please consult for advice.

Subject to alterations  
 © Christian Bürkert GmbH & Co. KG

0812/4\_EU-en\_00895034